



HOLD HHT081K

Warm holding cabinet

CONSTRUCTION FEATURES

- Tightness chamber with radiuses corners
- All-around rubber bumpers
- Total thermic insulation with rock or glass wood
- Long lasting front seal, made up of food-grade and high-heat resistant silicone
- Removable side racks to facilitate cleaning
- Static heating provided by low consumption wire heating element that coils up all the chamber DELIWARM®
- Ergonomic and fully built-in door handle with magnetic closure
- Four swivel wheels of which 2 with brake
- Ergonomic handle for pushing and guiding
- Easy access to facilitate maintenance and repair

FUNCTIONAL FEATURES

- Electronic capacitive control, temperature, holding cycle, programs, holding by probe*
- Operating temperature 30°-120°C
- Adjustable humidity vents on the door
- Chamber with safety thermostat
- Manual keyboard lock
- Automatic Holding Cycle (*only with Core Probe option)

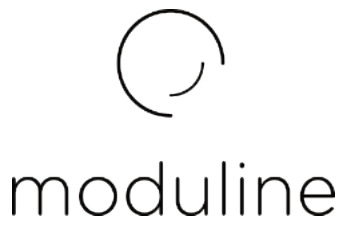
STANDARD SUPPLY

- Removable GN 1/1 tray racks


OPTIONS & ACCESSORIES


- Core Probe
- Feet kit
- Grids
- Trays
- Opposite side opening
- Uk Plug
- WiFi

MODULINESRL

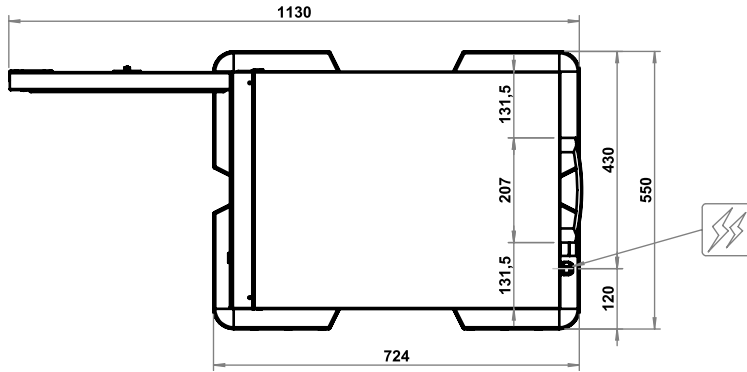
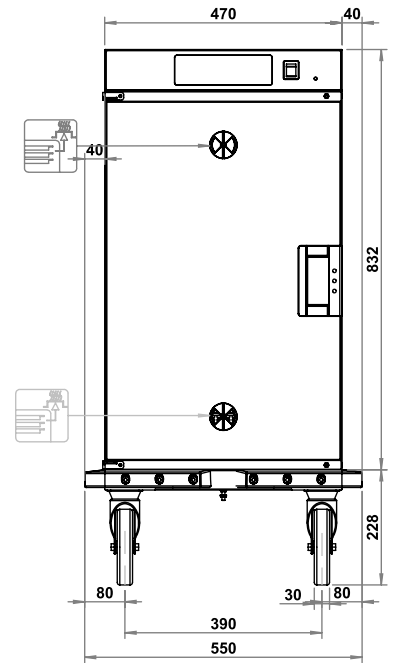
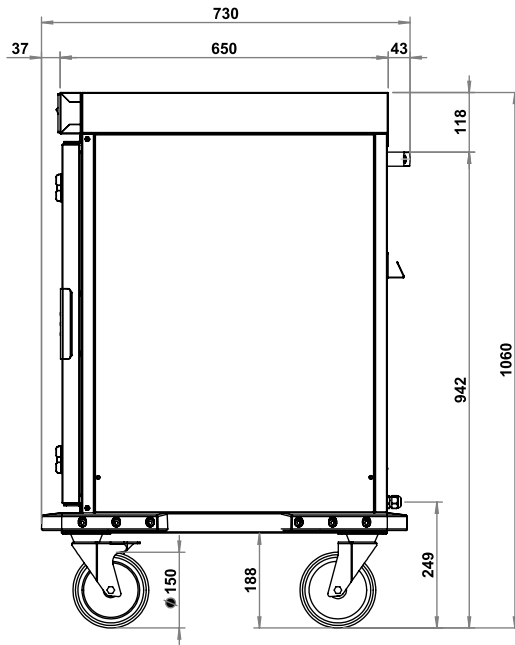


**TECHNICAL
INSTALLATION
DIAGRAM**

Electricity supply
cable inlet 

Vent for excess
humidity 

Important - Drawing and
dimensions refer to the
standard version.
They may change with
the addition of
accessories
or options.



Overall dimensions
(W x D x H) - mm

550 x 724 x 1060 h

**Trays capacity -
distance [mm]**

8 x GN 1/1 - (75)

**Tray max. height
[mm]**

8 x 65 (h)
3 x 150 (h)
2 x 200 (h) + 2 x 65 (h)

Power supply

AC 220-240V 50/60Hz

**Total input
[kW]**

1 (230V)

**Amps.
[A]**

4,4 (230V)

**Working
temperature [°C]**

30 ÷ 120

**Product max
capacity [Kg]**

29

**Net weight
[Kg]**

46



- A On/Off switch beside the board
- B Info Display
- C Start / Stop or Preheating
- D Decrease value
- E Programs (Save or Recall)
- F Increase value
- On/Off switch beside the board

MODULINESRL